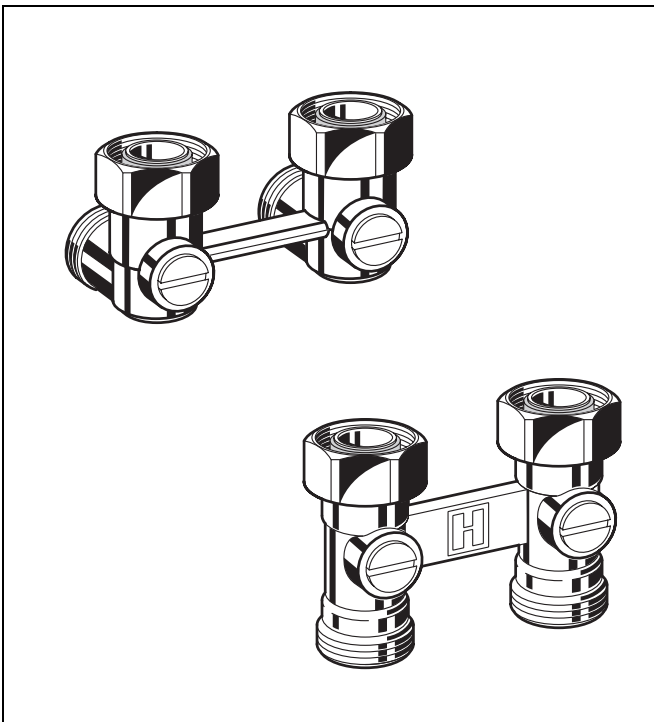


## V2495 Verafix-VKE

### H-BLOCK FOR COMPACT RADIATORS

#### PRODUCT DATA



#### Design

The Verafix-VKE consists of:

- Straight valve body for floor connection or angle valve body for wall connection
- Ball valve insert
- Radiator connection nuts
- Universal externally threaded connections (Eurotaper connections) suitable for copper, precision steel tube, plastics and composite tube (see accessories for external thread fittings)

#### Materials

- Hot-forged brass body
- Brass nickel ball valve insert
- EPDM O-ring sealings
- Brass union connections
- Brass radiator connection nuts
- Seat sealings PTFE
- EPDM seals

#### Application

The Verafix-VKE is an lockshield valve for compact radiators with connection centres of 50 mm. It is used on two-pipe systems with radiators which have integral valves to regulate and shut-off individual radiators.

Verafix-VKE is suitable for hot water heating systems.

Verafix-VKE with 1/2" internal threads are suitable for radiators which include the following makes:

Bemm	Finimètal	Northor	Superia
Concept	Ferrolì	Purmo	Thor
Dia-Norm	Henrad	Radson	VEHA
Dia-therm	Korado	Schäfer	Vogel & Noot
Dura	Manaut	Stelrad	

Verafix-VKE with 3/4" external threads are suitable for radiators which include the following makes:

Baufa	Buderus	Kermi	Ribe
Brötje	De Longhi	Reusch	RIOPanel
Brugman			

#### Features

- **Optional flow direction. Performance values apply for both directions of flow**
- **Robust brass housing**
- **Connection on pipework side 3/4" external thread for copper, soft steel, plastic and composite pipes**
- **Connectors on radiator side 1/2" internal or 3/4" external thread**

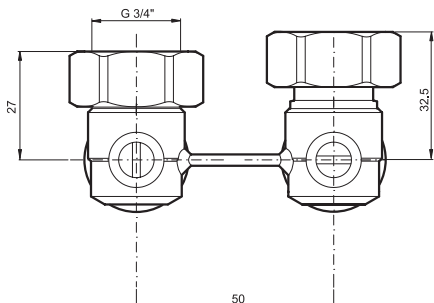
#### Specifications

<b>Medium</b>	Water
<b>ph-value</b>	8...9.5
<b>Operating temperature</b>	max. 120°C (248°F)
<b>Operating pressure</b>	max. 10.0bar (145psi)
<b>kv(cv)-value</b>	
<b>Straight</b>	3.5
<b>Angle</b>	1.8

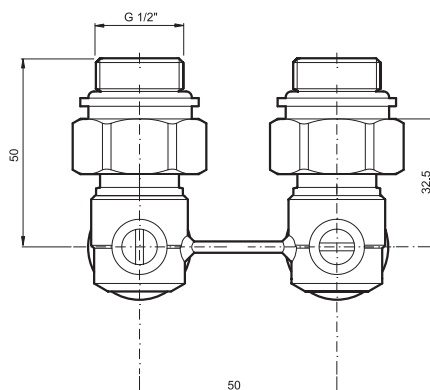
## Function

The supply and return of the radiator can be shut-off by turning the ball valve inserts of the Verafix-VKE to the horizontal position with a screwdriver. The valves are supplied set fully open.

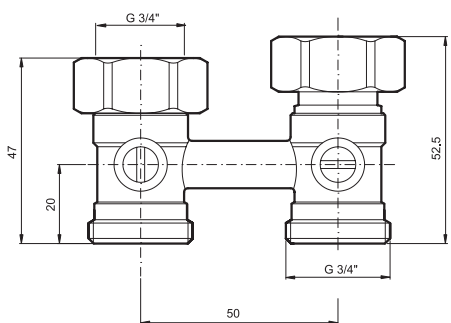
## Dimensions



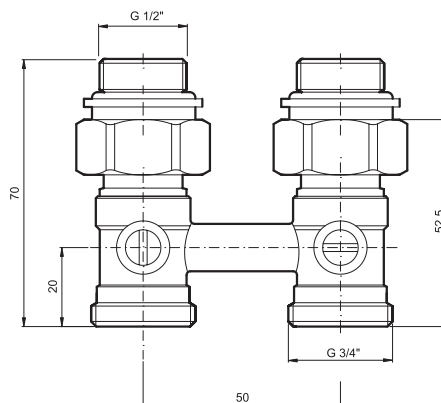
**Fig. 1. Dimensions Verafix-VKE angle with integrated cone**



**Fig. 2. Dimensions Verafix-VKE angle with integrated cone and double nipple**



**Fig. 3. Dimensions Verafix-VKE straight with integrated cone**



**Fig. 4. Dimensions Verafix-VKE straight with integrated cone and double nipple**

NOTE: All dimensions in mm unless stated otherwise.

## Ordering Information

**Table 1. Dimensions and OS-Nos (OS=Ordering System)**


Type	Pipe connection	Radiator connection	DN	k <sub>vs</sub> (cv)-value	OS-No.
Angle (wall connection) integrated cone	3/4" external	3/4" external	15	1.8	V2495EX020A
Angle (wall connection) integrated cone and double nipple	3/4" external	1/2" internal	15	1.8	V2495EY015A
Straight (floor connection) integrated cone	3/4" external	3/4" external	15	3.5	V2495DX020
Straight (floor connection) integrated cone and double nipple	3/4" external	1/2" internal	15	3.5	V2495DY015

## Accessories


### Connections for copper and soft steel pipe (2 pcs.)

	3/4" x 10 mm	VA7200A010
	3/4" x 12 mm	VA7200A012
	3/4" x 14 mm	VA7200A014
	3/4" x 15 mm	VA7200A015
	3/4" x 16 mm	VA7200A016
	3/4" x 18 mm	VA7200A018


### Connection for composite pipe (2 pcs.)

	3/4" x 14 x 2 mm	OT113M-3/4D
	3/4" x 16 x 2 mm	OT113M-3/4F
	3/4" x 18 x 2 mm	OT113M-3/4H


### Connection for copper pipe (2 pcs.)

	3/4" x 10 mm	OT114M-3/4B
	3/4" x 12 mm	OT114M-3/4C
	3/4" x 14 mm	OT114M-3/4D
	3/4" x 15 mm	OT114M-3/4E
	3/4" x 16 mm	OT114M-3/4F
	3/4" x 18 mm	OT114M-3/4H

### Connection for PE-X pipe (2 pcs.)

	3/4" x 14 x 2 mm	OT112M-3/4D
	3/4" x 16 x 2 mm	OT112M-3/4F
	3/4" x 16 x 2,2 mm	OT112M-3/4F2
	3/4" x 17 x 2 mm	OT112M-3/4G
	3/4" x 18 x 2 mm	OT112M-3/4H

### Double nipple (2 pcs.)

	for all V2495	VS3295A015
---	---------------	------------

## Installation Example

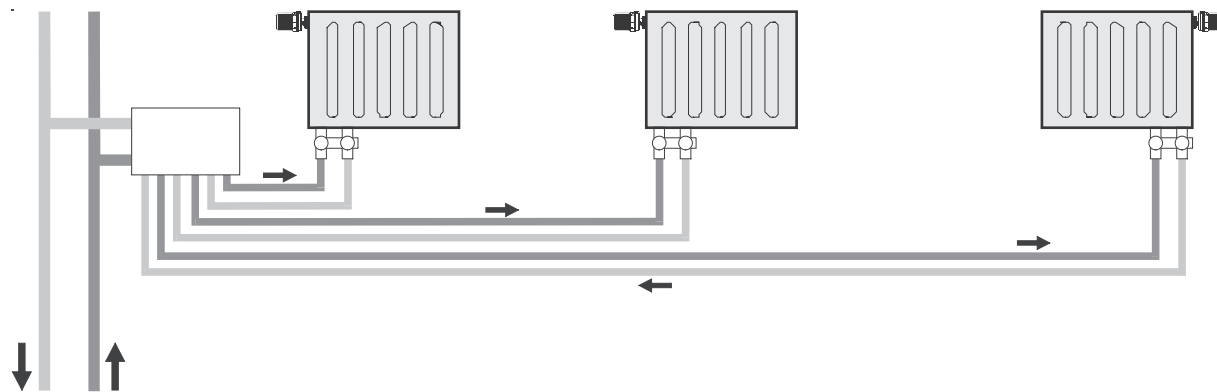
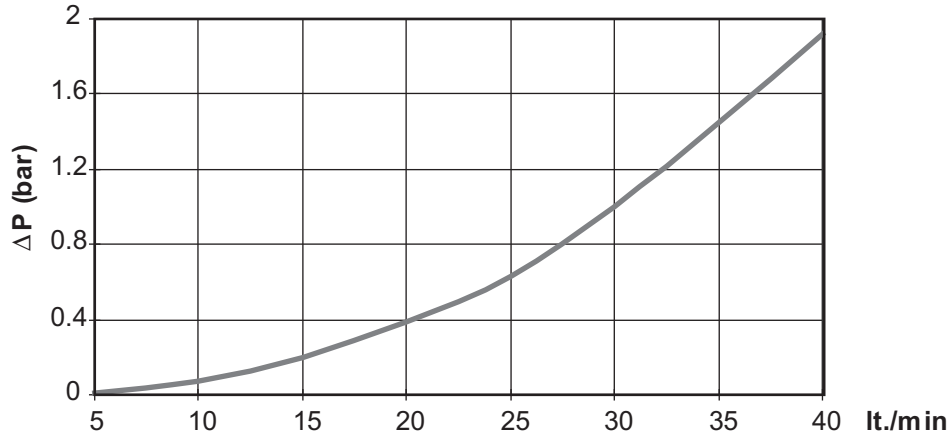


Fig. 5. Two-pipe system with distribution manifold and Verafix-VKE

### Please Note:

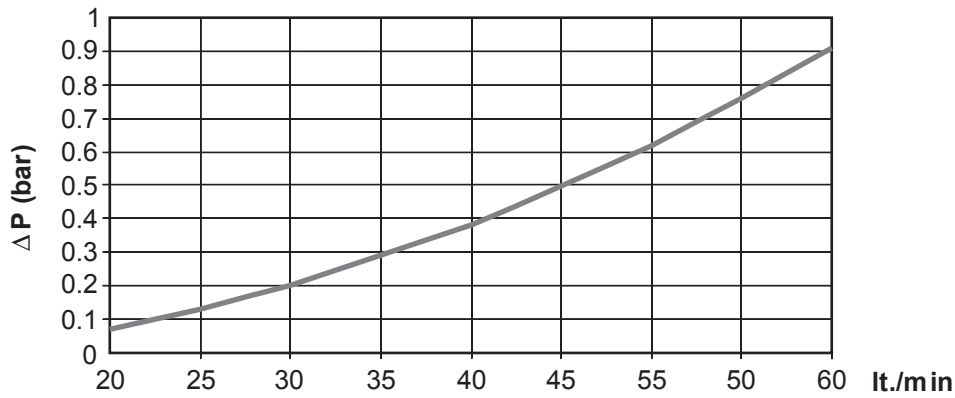
- To avoid stone deposit and corrosion the composition of the medium should conform with VDI-Guideline 2035
- Additives have to be suitable for EPDM sealings
- System has to be flushed thoroughly before initial operation with all valves fully open
- Any complaints or costs resulting from non-compliance with above rules will not be accepted by Honeywell
- Please contact us if you should have any special requirements or needs

### Flow Diagram VKE2495E



lt./min	5	10	15	20	25	30	35	40
Δp (bar)	0.01	0.07	0.20	0.39	0.63	1.00	1.45	1.92

### Flow Diagram VKE2495D



lt./min	20	25	30	35	40	45	50	55	60
Δp (bar)	0.07	0.13	0.20	0.29	0.38	0.50	0.62	0.76	0.91

**Automation and Control Solutions**

Honeywell GmbH  
 Hardhofweg  
 74821 Mosbach, Germany  
 Phone: +49 (6261) 810  
 Fax: +49 (6261) 81393  
 www.honeywell.com

EN0H-2211GE25 R0807  
 August 2007  
 © 2007 Honeywell International Inc.  
 Subject to change without notice  
 Manufactured for and on behalf of the Environmental and Combustion  
 Controls Division of Honeywell Technologies Sàrl, Ecublens, Route  
 du Bois 37, Switzerland or its authorized representative.

